



Radboud University Nijmegen Medical Centre
Department of Cognitive Neuroscience
Donders Institute for Brain, Cognition and Behaviour,
Geert Grooteplein-Noord 21
6525 EZ Nijmegen, The Netherlands.

[Website](#)

Project leader



Prof. Jan K. Buitelaar

Dept. of Cognitive Neuroscience, Radboud
University Nijmegen Medical Centre,
Nijmegen, the Netherlands.

Phone +31 (0)24 36 10 750 or +31 (0)24 36 10 655

Fax +31 (0)24 35 41 435

[E-Mail](#)

Project staff



Marianne Oldehinkel

Dept. of Cognitive Neuroscience, Radboud
University Nijmegen Medical Centre,
Nijmegen, the Netherlands.

Phone +31 (0)24 36 68 291

Fax n.a.

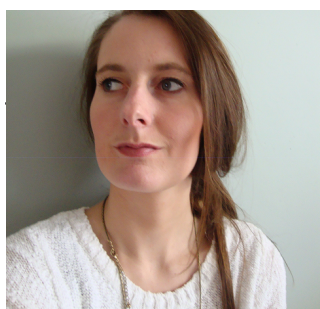
[E-Mail](#)

Saskia de Ruiter

Dept. of Cognitive Neuroscience, Radboud
University Nijmegen Medical Centre,
Nijmegen, the Netherlands.



Phone +31 (0)24 35 12 258
Fax n.a.
E-Mail



Jill Naaijen
Dept. of Cognitive Neuroscience, Radboud
University Nijmegen Medical Centre,
Nijmegen, the Netherlands.
Phone +31 (0)24 36 10 986
Fax n.a.
E-Mail



Marcel Zwiers
Dept. of Cognitive Neuroscience, Radboud
University Nijmegen Medical Centre,
Nijmegen, the Netherlands.
Phone +31 (0)24 36 68 495
Fax +31 (0)24 36 68 989
E-Mail



Sophie Akkermans
Dept. of Cognitive Neuroscience, Radboud
University Nijmegen Medical Centre,
Nijmegen, the Netherlands.
Phone +31 (0)24 36 10 631
Fax n.a.
E-Mail



Leonie Hennissen

Dept. of Cognitive Neuroscience, Radboud University Nijmegen Medical Centre, Nijmegen, the Netherlands.

Phone +31 (0)24 36 13 678

Fax n.a.

E-Mail



Nicole Driessen

Dept. of Cognitive Neuroscience, Radboud University Nijmegen Medical Centre, Nijmegen, the Netherlands.

Phone n.a.

Fax n.a.

E-Mail

Institute presentation

The Radboud University Nijmegen Medical Centre (RUNMC) is a leading Dutch institute for medical research. The Neuropsychiatry Research Group (Department of Cognitive Neuroscience) and the Karakter Child and Adolescent Psychiatry University Centre are specialized in top-level clinical care and research in neuropsychiatric disorders such as ADHD and Autism Spectrum Disorders, Conduct Disorder and associated problems including suicidality associated with medication. The Nijmegen outpatient clinics have about 2000 new child and adolescent patients per year.

The Neuropsychiatry Research Group has been involved in many international collaborations, including multiple site international medication trials and NIH sponsored projects on the genetics of ADHD (International Multisite ADHD Genetics – IMAGE) and on gene-by environment interactions in an Autism Birth Cohort. Both Prof. Buitelaar and Dr. Glennon have been lead Principal Investigators of several large-scale national research projects, including topics as diverse as screening studies for Autism Spectrum Disorders and translational (preclinical and clinical) pharmacology in psychiatric disorders. Prof. Buitelaar is also the Principal Investigator of the Pediatric European Risperidone Study (PERS) funded by FP7, leader of workpackages in two other FP7 funded projects (STOP and ADDUCE), and Principal Investigator of the

NeuroIMAGE study.